

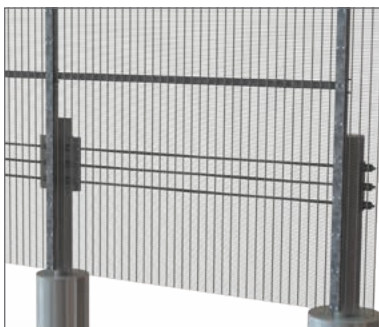


BLOKAD® Securifor® Super 10

BLOKAD® Securifor® Super 10 is engineered to meet the performance requirements of ASTM F2656 M30 P1 and LPS 1175 Issue 8 (B3), supporting resistance to vehicle ramming and forced entry attempts. The combined design objectives reinforce confidence in the system's suitability for critical infrastructure applications.



Systems detail



Benefits

Engineered Performance with Targeted Delay Against Real-World Threats

Designed to meet the performance objectives of LPS 1175 Issue 8 (B3) and ASTM F2656 M30 P1, addressing both forced entry and vehicle impact scenarios. These combined design targets support risk mitigation strategies for operators, insurers, and stakeholders responsible for critical infrastructure

Integrated Multi-Threat Protection in One System

Unlike conventional perimeter solutions, BLOKAD® Securifor® Super 10 combines anti-climb, anti-cut, and hostile vehicle mitigation within a single engineered system. No need for separate crash barriers or additional perimeter layers, reducing complexity and installation footprint.

Lower Total Cost of Ownership

An integrated High-Security and Crash-Rated fencing solution removes the need for separate perimeter and HVM fences, saving space, reducing civil works, and significantly lowering the Total Cost of Ownership

Strong Visual Deterrence

The narrow mesh aperture and robust wire construction create a clear psychological barrier, reinforcing site security while maintaining a clean, professional appearance suitable for data centres and sensitive facilities.

Long-Term Durability & Reduced Lifecycle Costs

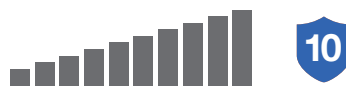
Engineered with reinforced steel construction and high-performance coatings (up to 10-year extreme guarantee), the system delivers long-term resistance to corrosion, vandalism, and environmental stress, helping to optimise total cost of ownership.

Functionalities



Security level

(when compared to other **high security fencing systems** options)



Post

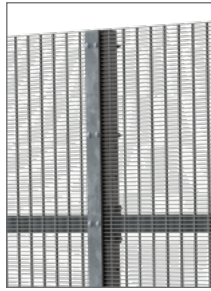
Rectangular post fence:

Section: 80 x 60 mm

Fixation: with cover plate

Type of fixation on post:

- M8x110 Mushroom Square Neck Round Head Bolts thru the post
- Secured with M8 break off Nuts at the back



Round crash post:

Section line post: 180 x 8 mm

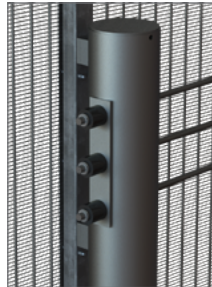
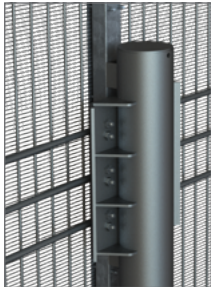
Section terminal end post: 219 x 8 mm

Cable fixture specification: to line posts :

- M18 GRIP BOLTS
- M18 U-BOLT
- M18 NUT

Cable fixture specification: to terminal posts

- KM22-1860 Cable Anchor Tool



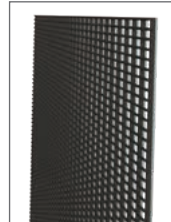
Panel

Three panel executions are available to adapt the system to different security requirements and site configurations:

- Straight (Standard)
- Cranked (Angled)
- Arced (Rolled)

All panels are engineered for high security and durability, ensuring consistent certified performance across all configurations.

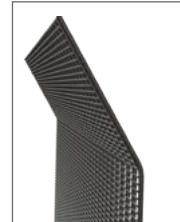
STRAIGHT



CURVED



ARCHED



Technical characteristics:

- Mesh size: 76.2 x 12.7 mm
- Horizontal wire diameter: 4 mm
- Vertical wire diameter: 10 mm
- Panel width: 2753 mm

Additional reinforcement bars are integrated to increase the rigidity of the installation and enhance overall structural stability.

Installation methods

Two installation configurations are available to suit site requirements and ground conditions:

- Either with panels partially **buried into the ground** for increased security at the base.
- Surface-mounted panels fixed onto a continuous **L-profile** for additional Security.

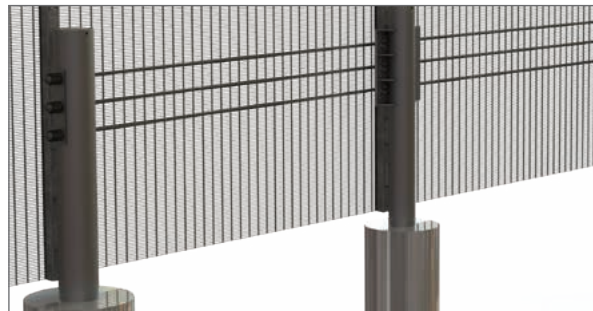
Colours

Green RAL 6005, Anthracite RAL 7016, White RAL 9010 and Black RAL 9005. Other colours are available on request.

Coating technique



Our coating technology guarantees a long product lifetime even in corrosive environments.



Fence Width (mm)	Fence Height (mm)	Number of Reinforcement brace rails (mm)	Reinforcement brace rails section (mm)	Post Fence					Crash Post				
				Length of post (mm)	Cover plate section (mm)	Post section (mm)	Number of bolts per intermediate post	Number of bolts per corner post	Length of crash post (mm)	Line post section (mm)	Terminal end post section (mm)		
2753	2000	1	60 x 40 x 3	2000	80 x 5	80 x 60 x 2	14	14 x 2	2406	180 x 8	219 x 8		
	2400			2420								18	18 x 2
	3000			3005								22	22 x 2
	4000	4008		28								28 x 2	3156

Saudi Arabia:
6th Floor, Sumou Tower,
Prince Turki Street, Al Yarmouk
Al Khobar-34423
Kingdom of Saudi Arabia

Middle East:
P.O. Box 293517 DAFZA,
Building E 5, Block A 8th Floor,
Office 802

Belgium:
Blokkestraat 34B
8550 Zwevegem
Belgique

Asia:
70 Yang Guang Avenue,
Changshu Suzhou,
Jiangsu,
China 21550

USA:
3309 SW Interstate 45,
Ennis, TX 75119

Betafence is the world market leader in fencing solutions, access control and detection for perimeter protection. All Betafence companies and product names are trademarks owned by PRÆSIDIAD Group Limited. Modification in products and assortment are subject to change without prior notice.

Proud to be a PRÆSIDIAD brand. Betafence is part of a global network, working alongside Hesco as a leader in perimeter security systems and solutions. For more information please visit praesidiad.com.

BETAFENCE
Securing What Matters

betafence.com