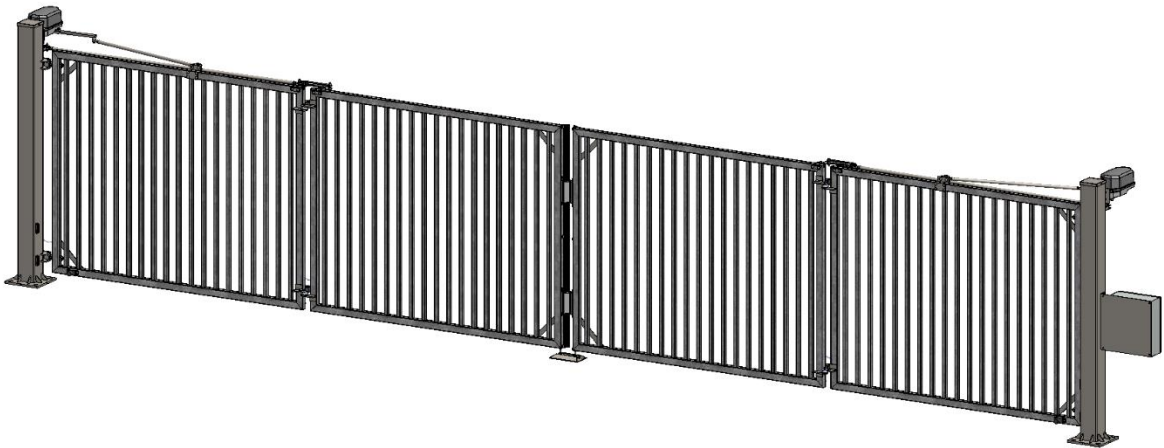


SPEED FOLDING GATES



Faldivia[®]

Installation
Manual

Table of contents

1.	Warnings.....	2
1.1.	Warnings for installer and end user	3
1.2.	Special points to note	3
1.3.	Safety rules for end user	4
2.	Guidelines for installation	5
3.	Guidelines for gate lifting	5
4.	Foundations.....	6
4.1.	Minimum levels of safeguarding at main edge	6
4.2.	Space around the gate	6
5.	Preparations before gate installation	8
5.1.	Fixing requirements	8
5.2.	Installation of the ground anchors	8
5.3.	Preparing installation levels	9
6.	Installation of the gate onto the ground anchors.....	9
7.	Installation of the ground catcher support onto the ground anchors	10
8.	Alignment and levelling of the gate.....	10
9.	Cabinet equipment	16
10.	Power Supply	17
11.	Connection between posts	19
11.1.	Connection diagram of boxes between posts.....	19
12.	Adjustment and testing of safety equipment	21
12.1.	Safety strips	21
12.2.	Photocells	22
12.3.	Remote controls	22
12.3.1	Programming Remote control devices to the board	22
12.3.2	Remote control parameters	23
12.3.3.	Programming a transmitter to another transmitter	24
12.3.4.	Parameter adjustment	25
13.	The most important parameters to set the gate	25
13.1.	Motor angle settings	26
13.2.	Safety edges.....	26
13.3.	Load guard and motor settings.....	28
13.4.	Frequency converter channel list	29
13.5.	Photocell	30
14.	Indications	31

1. Warnings

These warnings constitute an integral and essential part of the product and must be issued to the user. Carefully read the warnings in this chapter as they supply important information

The information and data given are typical for the product described. However technical changes are possible without any notice.

Proud to be a PRÆSIDIAD brand, Betafence is part of a global network, working alongside Guardiar and Hesco as a leader in perimeter security systems and solutions. For more information please visit praesidiad.com.

concerning the safety issues during installation, use and maintenance. This handbook must be kept safely for any future consultation.

1.1. Warnings for installer and end user

After removing the packaging, make sure that the equipment is in a good & serviceable condition. If this is not the case, please do not use the equipment until it has been checked by professional qualified personnel. Children should not be allowed to come into contact with packaging elements (plastic bags, expanded polystyrene, nails, etc.) as they are potential sources of danger.

The installation must be carried out by qualified personnel, which have received technical training on the product, in accordance with current regulations and according to the manufacturer's instructions. The installation regulations can vary from country to country. Incorrect installation can cause harm to humans, animals and foreign objects, for which the manufacturer cannot be held responsible.

In case of a failure and/or poor functioning of the equipment, apply exclusively only professional qualified personnel, ideally the manufacturer or a certified installer. Only original spare parts should be used to carry out the repairs to the product. A lack of observance of that mentioned above could compromise the safety of the equipment.

This gate should only be used for that what it has been expressly designed for (the complete system). Any other use breaching this, should be considered improper and therefore dangerous. Betafence cannot be held responsible for eventual damage caused by improper, incorrect and unreasonable use.

1.2. Special points to note

- Avoid operating close to mechanical moving components, this could lead to a dangerous situation, should parts of the body or clothing become caught up in them. The difficulty of freeing oneself from their grasp is not always possible and can lead to serious injury.
- Only set the gate in motion when it is completely visible and free from all hazards and obstacles.
- Do not try to stop the gate manually once in motion, this can lead to damage or serious injury.
- Please note that the gate can generate a considerable force during operation, which could be a source of danger. Do not move into the operating area of the gate during motion.
- Do not allow children to play by opening and closing the gate.
- Do not allow children to play within the opening area of the gate.
- **Ensure that the electromagnetic lock is installed, functioning and locked properly when the gate wing is closed.**
- Ensure that the wing is held properly (manual operation) during the opening or closing of the gate so that uncontrolled movement of the wing can be excluded. Reduce speed when reaching the fully open and fully closed positions to avoid unnecessary wear when

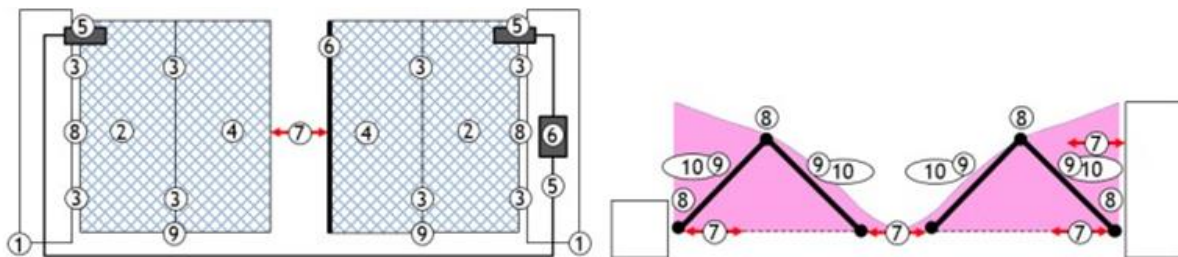
The information and data given are typical for the product described. However technical changes are possible without any notice.

Proud to be a PRÆSIDIAD brand, Betafence is part of a global network, working alongside Guardiar and Hesco as a leader in perimeter security systems and solutions. For more information please visit praesidiad.com.

coming into contact with the buffers.

- During heavy wind conditions (greater than windload class 1) the gate should not be operated and kept in closed position

- Persons are not allowed to ride on the any part of gate during operation because of the following crush hazards:



1	Structural failure - supporting structures
2	Structural failure - leaf
3	Structural failure - hinges, fixings & travel stops
4	Structural failure - wind load
5	Electrical - shock/fire
6	Control - faults in safety systems
7	Crush - within 500mm of a fixed object (open/close)
8	Crush - hinge area
9	Crush - under gate
10	Impact - swept area

Please adhere to the following to prevent persons from getting caught between any of these mentioned elements and serious injury.

-Do not climb onto the wings or posts.

-Inform all users of these hazards. Ideally this information should be displayed at a suitable place either on or close to the gate.

-To guarantee the efficiency of the installation and its correct functioning, it is imperative that the manufacturers guide lines & maintenance instructions are observed.

1.3. Safety rules for the end user

- Attention: In all cases once the gate has been installed and taken into service the user is, from this point on responsible for the correct functioning of his gate.
- **The user is responsible for the following:**
 - Correct functioning of the gate

The information and data given are typical for the product described. However technical changes are possible without any notice.

Proud to be a PRÆSIDIAD brand, Betafence is part of a global network, working alongside Guardiar and Hesco as a leader in perimeter security systems and solutions. For more information please visit praesidiad.com.

- Regular & periodic maintenance => according to the separately available maintenance procedure
- Safety check's and inspection => according to the separately available maintenance and safety check procedure

Not adhering or not being able to prove that the periodic maintenance and safety checks have been performed, can influence the manufacturers guarantee that is provided on the gate. => see separate manufacturers guarantee.

- Under the safety and correct functioning of the gate it is understood that the user checks on a regularly basis (**minimum 2 x a year**) if all safety devices and access control options are still working properly as they should.
- Under the maintenance frequency it is understood that the maintenance that is described by the manufacturer has been followed. If a maintenance contract between the customer and **Betafence** exists, **Betafence** will take care of this maintenance in cooperation with the user.
- For gates installed in Germany the user must ensure that every 12 months the gate is inspected as per ASR A 1.7. Once inspected the testing agency raises a report. If the gate meets all requirements, then this is indicated in the report and a test sticker is applied to the gate. If the gate fails, then the faults are captured in the report and communicated to the user. The user is then responsible for the repairs and the re-submission of the gate for re-inspection.
- For older gates which have not been built according to DIN EN 13241-1, the user is obligated legally to ensure that his gate meets all new standards / regulations issued.

2. Guidelines for installation

- Only licensed technicians or installers who have had adequate product training provided by **Betafence** should be permitted to install the gate.
- The integration of the gate into a fence must not create additional dangers / hazards. Please read carefully the warning document and consider the integration examples in the document package delivered with the gate.
- The connection to the electrical power supply must be carried out by a qualified technician and in accordance with the regulations and standards that are applicable in the country of installation.

3. Guidelines for gate lifting

- Gates are delivered to the construction site completely assembled.
- Lift-up points for unloading and positioning during the installation.

The information and data given are typical for the product described. However technical changes are possible without any notice.

Proud to be a PRÆSIDIAD brand, Betafence is part of a global network, working alongside Guardiar and Hesco as a leader in perimeter security systems and solutions. For more information please visit praesidiad.com.

- The gate may only be lifted using the correct lifting tackle. This should have an up to date test certificate and be sufficiently dimensioned for the weight of the gate. By preference use undamaged flexible lift slings with sufficient lifting capacity.

4. Foundations

Specific foundation plans are prepared per gate. The specific foundation plan will be shared with the customer before delivery of the gate. The dimensions as indicated on the foundation drawing have to be followed very accurately.

4.1. Minimum levels of safeguarding at main edge

A: Hold-to-run control mode of operation;

B: Hold-to-run control mode of operation with a manual actuator equipped with a key switch or similar;

C: Limitation of forces;

D: A device detecting the presence of a person or obstacles on the ground on one side of the door;

E: Presence detection device, designed and installed in such a way that a person cannot be touched by a moving door leaf

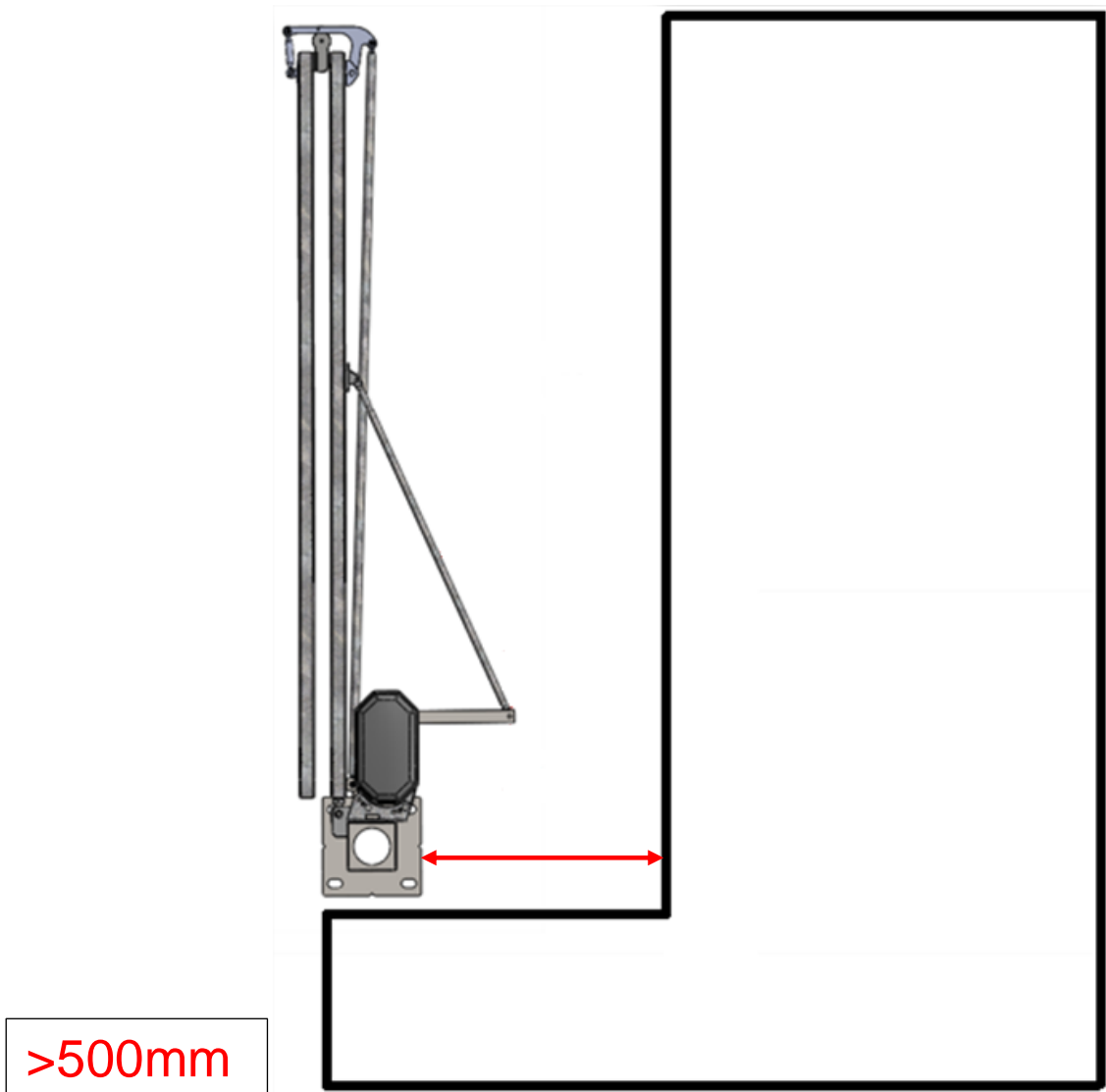
Type of door activation	Types of use	
	Trained users (public not likely to be present) Type 1	Trained users (public likely to be present) Type 2
Hold-to-run mode of operation	A	B
Impulse activation in sight of the door	C or E	C or E
Impulse activation out of sight of the door	C or E	C and D, or E
Automatic control	C and D, or E	C and D, or E

All regulations regarding safety requirements must be validated on specific installation site in accordance with the standard 12453: 2017 [E

4.2. Free space around the gate that needs to be respected

The information and data given are typical for the product described. However technical changes are possible without any notice.

Proud to be a PRÆSIDIAD brand, Betafence is part of a global network, working alongside Guardiar and Hesco as a leader in perimeter security systems and solutions. For more information please visit praesidiad.com.



The information and data given are typical for the product described. However technical changes are possible without any notice.

Proud to be a PRÆSIDIAD brand, Betafence is part of a global network, working alongside Guardiar and Hesco as a leader in perimeter security systems and solutions. For more information please visit praesidiad.com.

5. Preparations before gate installation

5.1. Fixing requirements

- Chemical anchors M30 x min. 600 mm for posts with “Fender” type washers (minimum 475 mm anchor depth and minimum 125 mm above finished Ground Level).
- Chemical anchors M10 x min. 500 mm for ground catchers (minimum 425 mm anchor depth and minimum 75 mm above finished Ground Level).
- For the mounting and securing of:
 - Post (8 anchors - M30)
 - Ground catcher (4 anchors - M10)

WARNING!

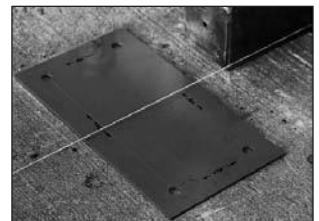
DO NOT USE MECHANICAL ANCHORS AS THEY ARE NOT SUITABLE FOR THIS APPLICATION!

The max distance between the concrete and post base plate should not be more than 50mm. Otherwise the stability is reduced.

(Within the warranty period, should the user report that “the gate does not move smoothly” and it is established that the gate position is not correct while this rule has not been followed, then the claim will not be accepted).

5.2. Installation of the ground anchors

- 1) Lay a tension line through the central axis of the foundations to indicate the exact position where the gate is to be installed. This incorporates the posts and the ground catcher support.
- 2) Position the templates for the posts. Using the tension line as a guide, align the center markings of the templates, ensure that the distances between the templates are adhered to as laid down in the foundation plans provided with the order document.
- 3) Mark the position of the holes with a small diameter concrete drill. This will help to centralize the final drilling to the required diameter.
- 4) Drill the corresponding holes for the fixation of the chemical anchors according to the supplier’s installation instructions. Drilled holes must be vertical.



The information and data given are typical for the product described. However technical changes are possible without any notice.

Proud to be a PRÆSIDIAD brand, Betafence is part of a global network, working alongside Guardiar and Hesco as a leader in perimeter security systems and solutions. For more information please visit praesidiad.com.

- 5) Remove any dust and small particles from the drill holes using a brush and hand pump. This will ensure perfect adhesion between the resin, ground anchor and the concrete foundation.
- 6) Place the chemical anchors according to the supplier's instructions. Resin drying times must be observed.

5.3. Preparing the installation levels

- 1) Screw the lower adjustment nuts onto their ground anchors some 50mm above the concrete and place the 3d washers onto the nuts.
- 2) Using a spirit level (see photo) adjust the height of all 4 nuts so that they are horizontal to one and other.
- 3) The nuts of each mounting position should be perfectly horizontal and relative to another, so that the horizontal and vertical positions for the main support elements of the gate are correctly aligned before the gate is lowered onto the anchors.



6. Installation of the gate onto the ground anchors

Important:

Ensure your electrical cables have been passed through the cable pipes that are provided in the concrete. This enables an easier installation of the cables into the main guide post. The cables should protrude **at least 2000mm** above the concrete.

Once this has been established the installation of the gate can begin.

- 1) The gate is positioned as a complete unit with the hinge post assembly onto their corresponding ground anchors.
- 2) Chronological order of actions:
 - 1) Remove the packaging from the gate.
 - 2) Position the gate with the posts above the ground anchors approximately 500mm above the ground.
 - 3) Open the access door of the post cabinet.
 - 4) Identify the cables which go to the post (photocells, etc.).
 - 5) Pull these cables through the cable pipe to the second post.



The information and data given are typical for the product described. However technical changes are possible without any notice.

Proud to be a PRÆSIDIAD brand, Betafence is part of a global network, working alongside Guardiar and Hesco as a leader in perimeter security systems and solutions. For more information please visit praesidiad.com.

- 6) Pass the exposed ends of the power supply and other cables through the hole in the base plate of the post into the connection box.
- 7) Cut off the straps which hold wing sections.
- 8) Now lower the gate until the post are resting on the washers of the ground anchors. Fit a washer and nut to each ground anchor. Tighten the nuts slightly for temporary fixation.

ATTENTION!

Ensure that cables and wires are not crushed between surfaces while lowering and positioning the gate onto the ground anchors.

7. Installation of the ground catcher support onto the ground anchors

- 1) Remove the ground catcher from the gate wing and suspend it over its ground anchors.
- 2) Position the ground catcher support onto the ground anchors and install the upper washers with nuts. Tighten the nuts slightly for temporary fixation.

8. Alignment and levelling of the gate

- 1) The posts should be placed vertically in the **closed** position. The vertical position is adjusted on the 4 (M30) threaded rods fixed in the foundation.

**Remarks:**

It's very important after the connecting, starting and setting the gate to fill the space under the plate of the posts and ground catcher with shrinkage-compensated concrete.

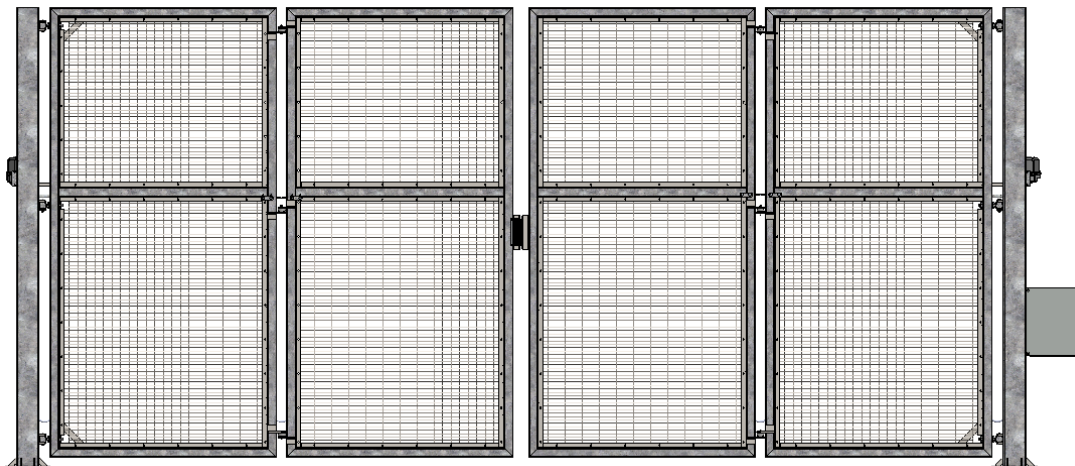
The information and data given are typical for the product described. However technical changes are possible without any notice.

Proud to be a PRÆSIDIAD brand, Betafence is part of a global network, working alongside Guardiar and Hesco as a leader in perimeter security systems and solutions. For more information please visit praesidiad.com.

2) Put the gate in manual (disengaged) mode => unscrew the T-pin.

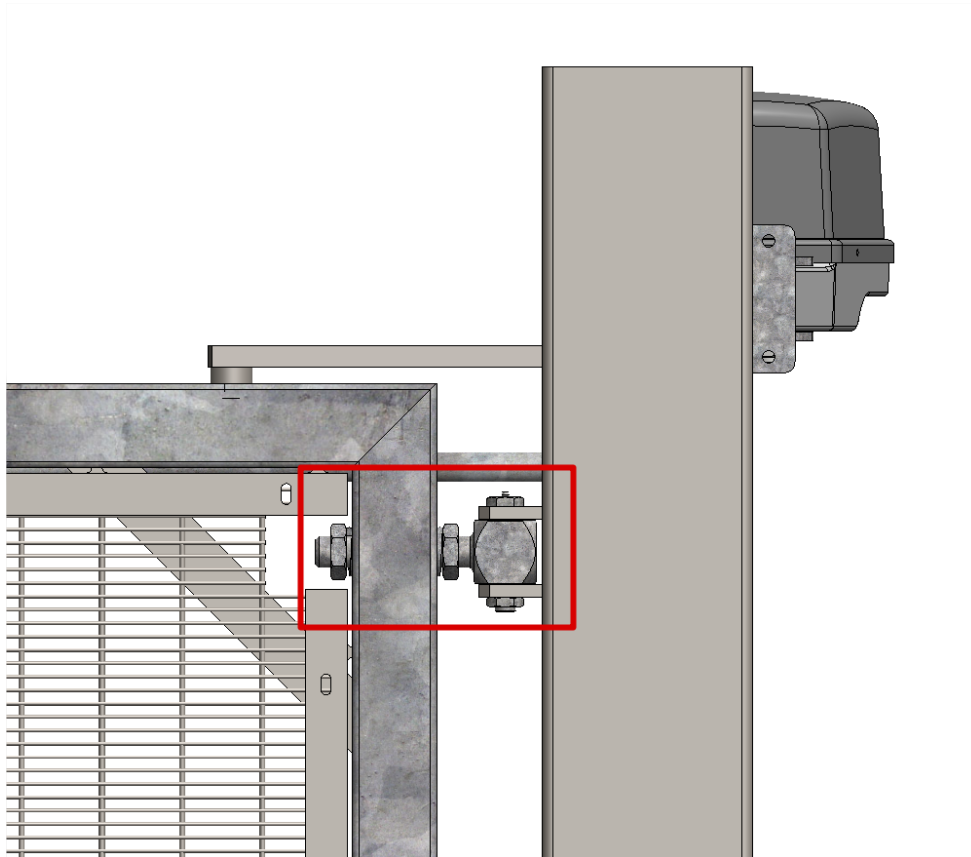


To align the wings horizontally, **adjust the hinges on the posts**. You can use both the upper, middle and lower hinges.



The information and data given are typical for the product described. However technical changes are possible without any notice.

Proud to be a PRÆSIDIAD brand, Betafence is part of a global network, working alongside Guardiar and Hesco as a leader in perimeter security systems and solutions. For more information please visit praesidiad.com.



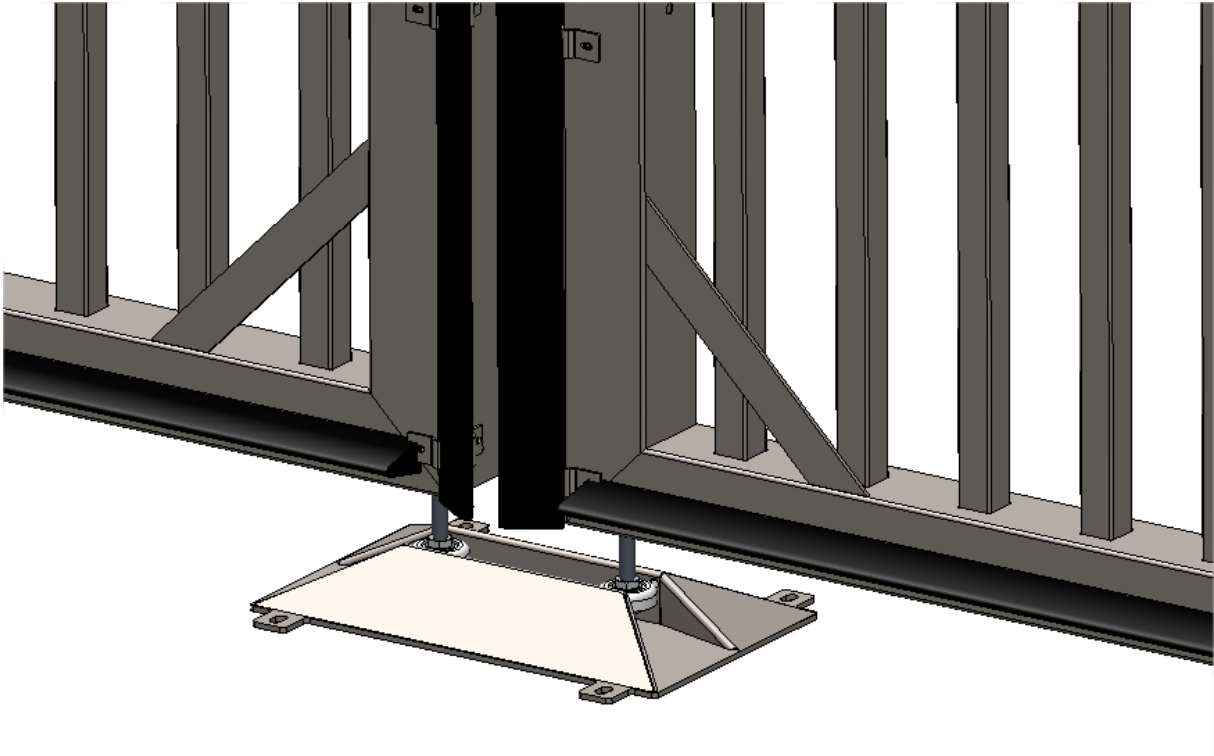
3) Align the post base plates straight in line:



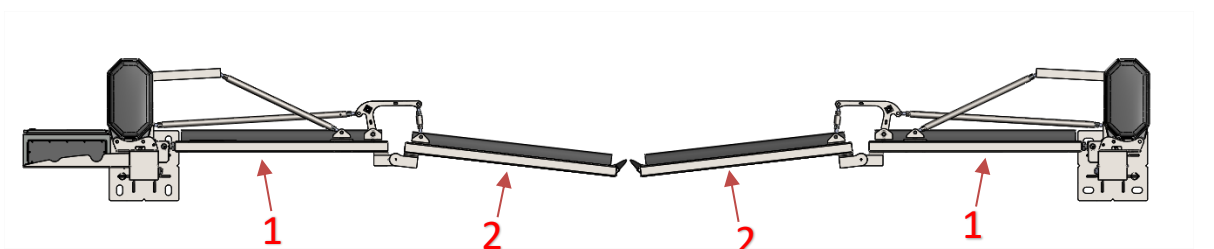
The information and data given are typical for the product described. However technical changes are possible without any notice.

Proud to be a PRÆSIDIAD brand, Betafence is part of a global network, working alongside Guardiar and Hesco as a leader in perimeter security systems and solutions. For more information please visit praesidiad.com.

- 4) Gates with a free passage of more than 6000mm or a height of more than 2400mm have a ground catcher to support the gate in the closed position (obligatory by CE certification). **(if the gate catcher is not installed or not used the CE marking lapses)**



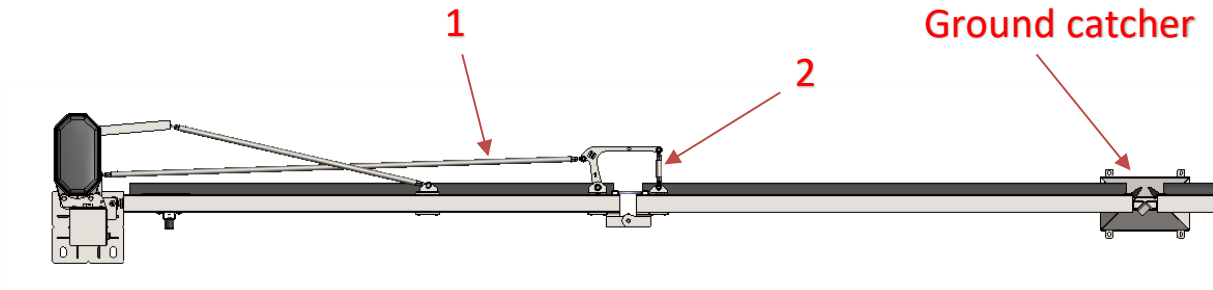
- 5) Gates with or without ground catcher are aligned on a different way, if you have a gate without ground catcher, please continue to step 8.
For gates with ground catcher if the gate is not installed in straight line (see picture below).
Wings with number 1 should be aligned, wings with number 2 need to be adjusted to the outside so they smoothly enter the ground catcher.



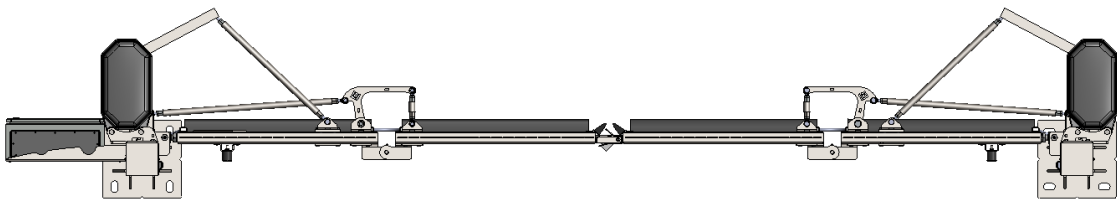
The information and data given are typical for the product described. However technical changes are possible without any notice.

Proud to be a PRÆSIDIAD brand, Betafence is part of a global network, working alongside Guardiar and Hesco as a leader in perimeter security systems and solutions. For more information please visit praesidiad.com.

- 6) Install the ground catcher on the ground.
- 7) If required, adjust the 2 wings **simultaneously**. Turn the adjustment rods 1 and 2 to change the angle of the wings. The wings should be adjusted so that the roller on the wing will enter the catcher smoothly.



- 8) For gates without ground catcher installing the base plates and wings in a straight line is enough.



- 9) Check if the gate moves freely by hand over the complete span of the wing during opening and closing. Do this slowly as not all adjustments are done.
- 10) After full adjustment of the gate, tighten all ground anchor nuts. Then cut the lengths of the ground anchor bolts to 5mm above the nuts, and paint with corrosion resistant paint (Do this only when the gate function has been tested and the installation is complete).
- 11) Setting the angle of the motor arm in the **closed** position is done by changing the parameters:

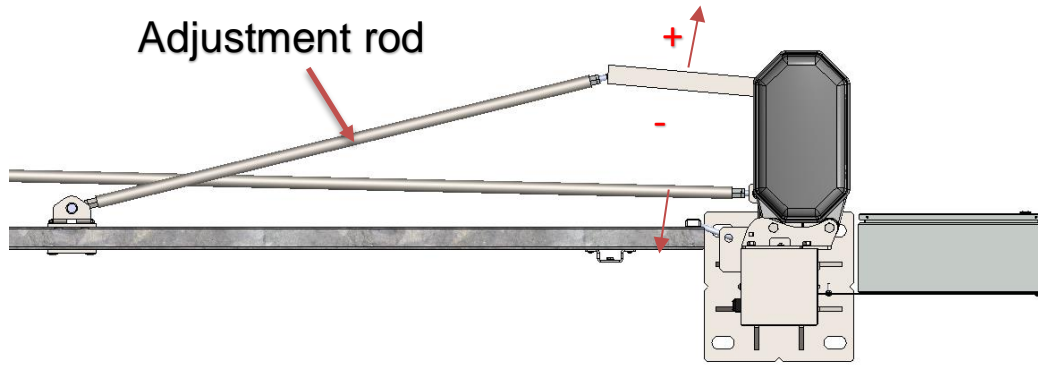
Motor 1: L113
Motor 2: L123

Increasing of this parameters moves the arm inside the property and decreasing to the outside.

An adjustment rod can be used for fine adjustment. Unscrew the lock nuts and adjust the position with the whole rod, tighten the lock nuts at the end.

The information and data given are typical for the product described. However technical changes are possible without any notice.

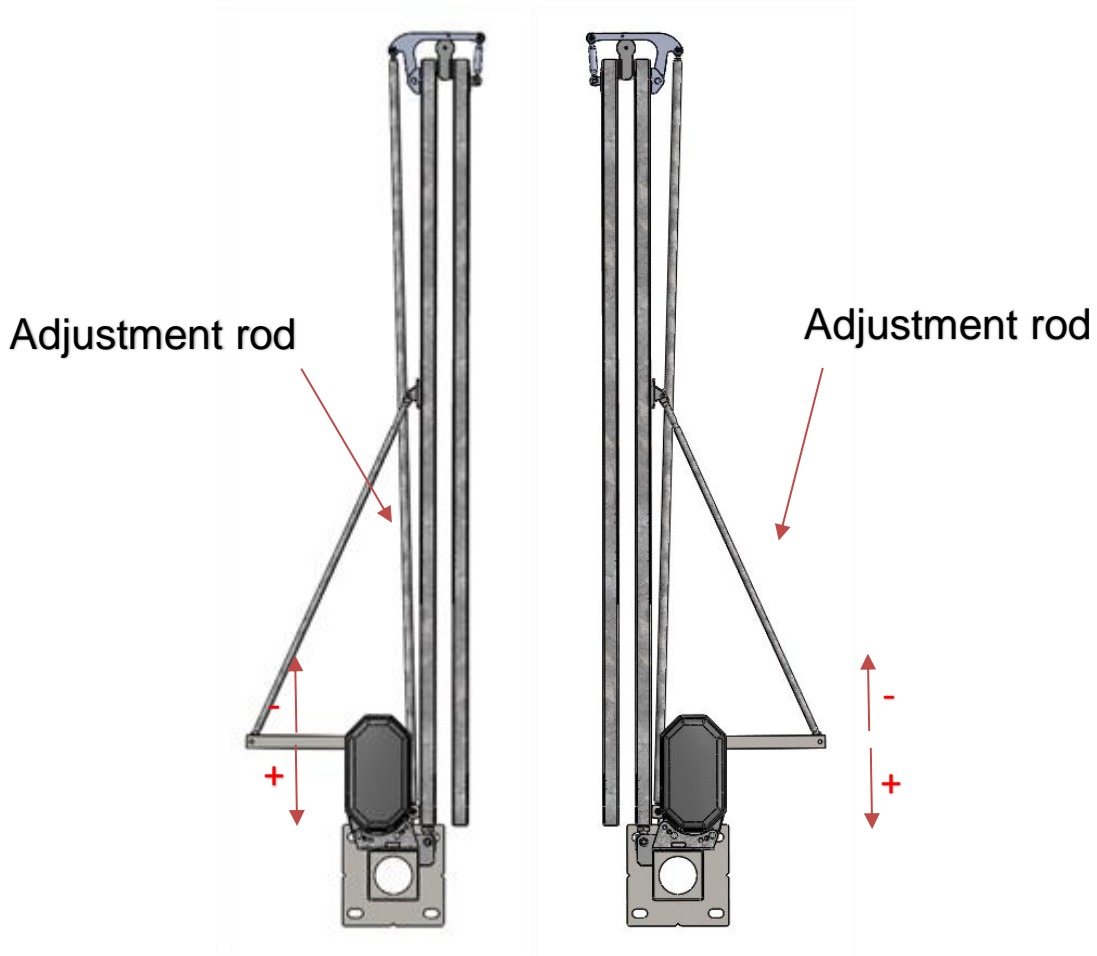
Proud to be a PRÆSIDIAD brand, Betafence is part of a global network, working alongside Guardiar and Hesco as a leader in perimeter security systems and solutions. For more information please visit praesidiad.com.



- 12) Setting the angle of the motor arm in the open position is done by changing the parameters:
 Motor 1: L112
 Motor 2: L122

Increasing of this parameters moves the arm outside of the property and decreasing to the inside.

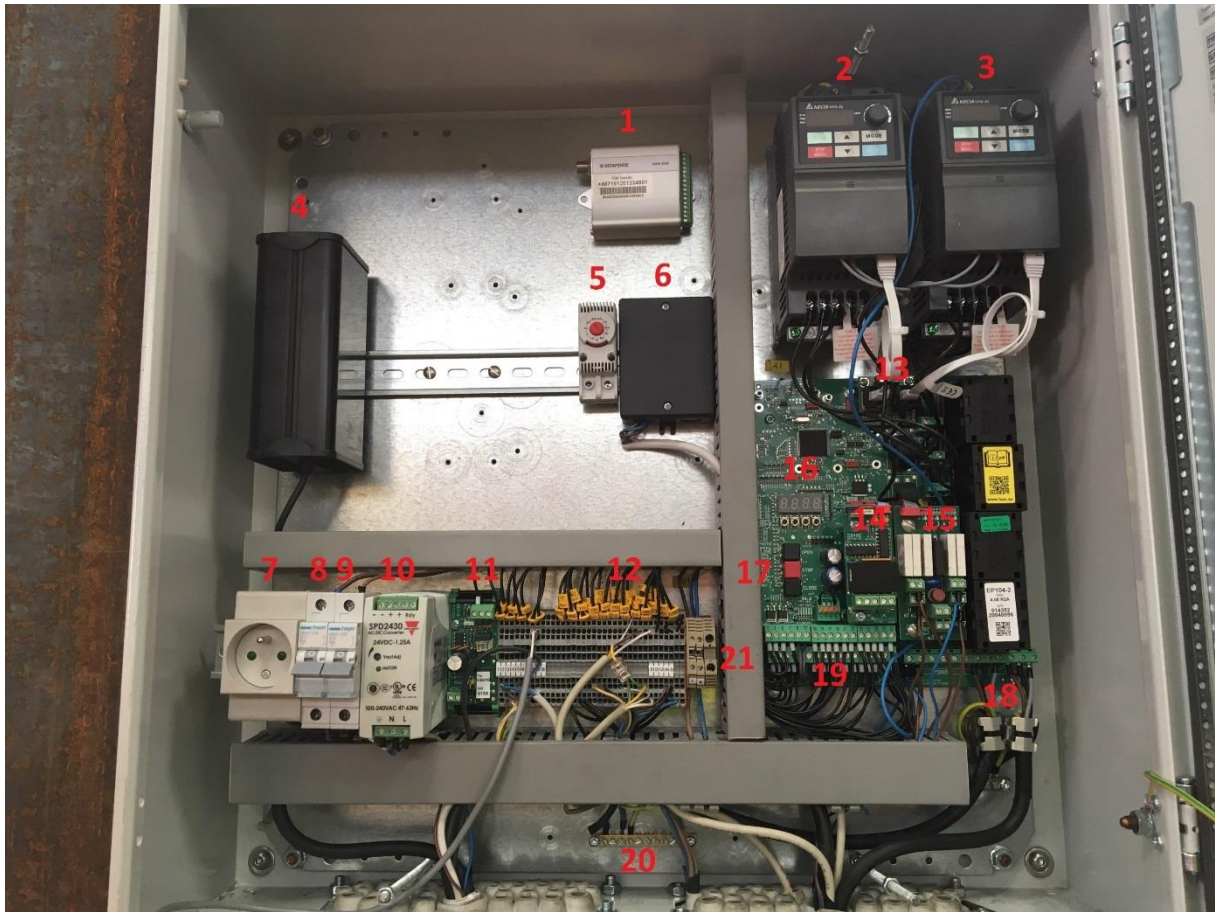
An adjustment rod can be used for fine adjustment. Unscrew the lock nuts and adjust the position with the whole rod, tighten the lock nuts at the end.



The information and data given are typical for the product described. However technical changes are possible without any notice.

Proud to be a PRÆSIDIAD brand, Betafence is part of a global network, working alongside Guardiar and Hesco as a leader in perimeter security systems and solutions. For more information please visit praesidiad.com.

9. Cabinet equipment



- 1) GSM module,
- 2) Frequency converter motor 1,
- 3) Frequency converter motor 2,
- 4) Heating element,
- 5) Thermostat for heating element,
- 6) Remote control receiver,
- 7) Socket,
- 8) Socket fuse,
- 9) Main fuse,
- 10) 230V ->24V transformer,
- 11) DB310, magnetic lock module,
- 12) Connection bridges,
- 13) DB409, frequency converter module,
- 14) DB402, loop detector module,
- 15) DB407, output card,
- 16) EP104 display and indicators,
- 17) Control buttons (open, stop, close),
- 18) Terminal block for motor 1 and 2,
- 19) Terminal block for low current,
- 20) Ground terminal,
- 21) Power supply.

The information and data given are typical for the product described. However technical changes are possible without any notice.

Proud to be a PRÆSIDIAD brand, Betafence is part of a global network, working alongside Guardiar and Hesco as a leader in perimeter security systems and solutions. For more information please visit praesidiad.com.

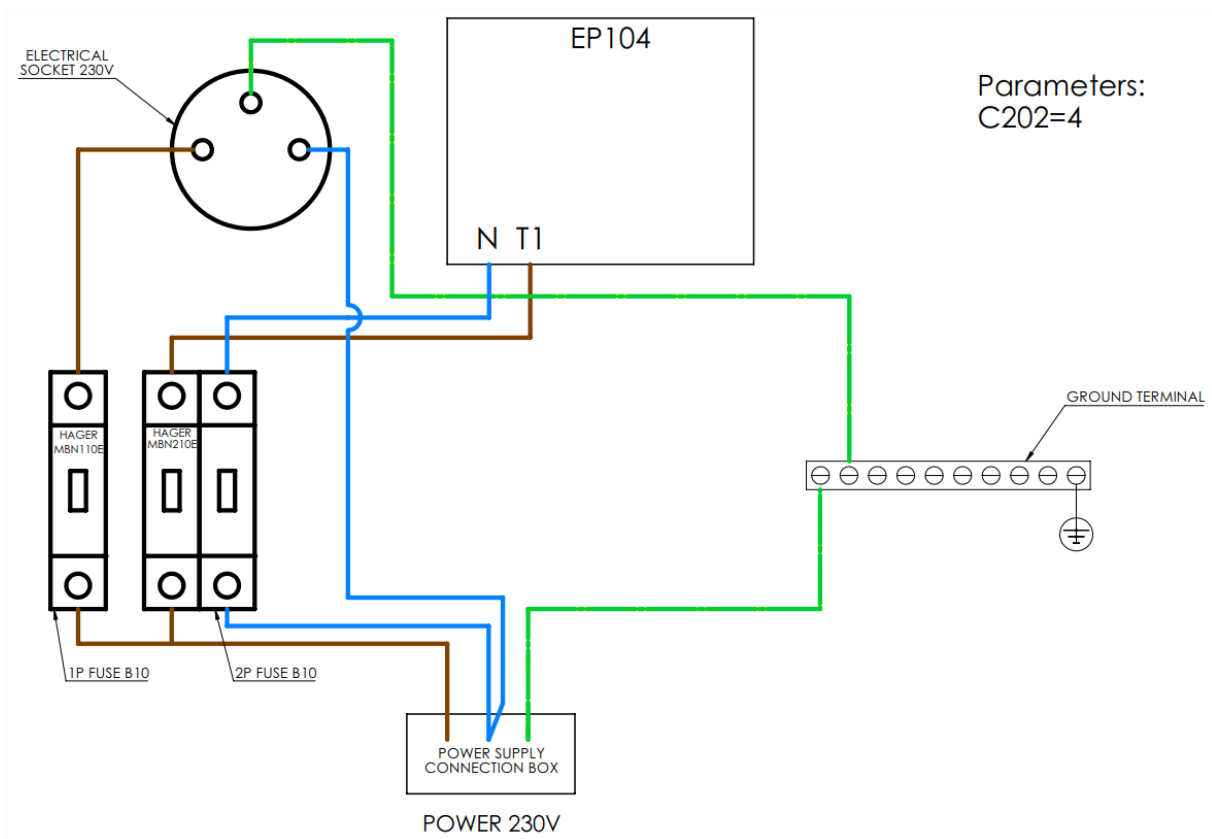
10. Power Supply

- 1) **The Power source must be 230V AC.** Connect the power supply cable to the main switch connectors. There are three connectors foreseen for the connection of the power supply. The cable from the main board to the gate must be secured according to the latest electrical installation regulations.

Use a low voltage solid cable with a section according to the table underneath. (For example: NYJZ 3 x 2,5mm² according to VDE0276 part 603, VDE 0271 and IEC 52)

Section (mm ²)	Maximum distance (m)
2.5	300
4	600
6	900

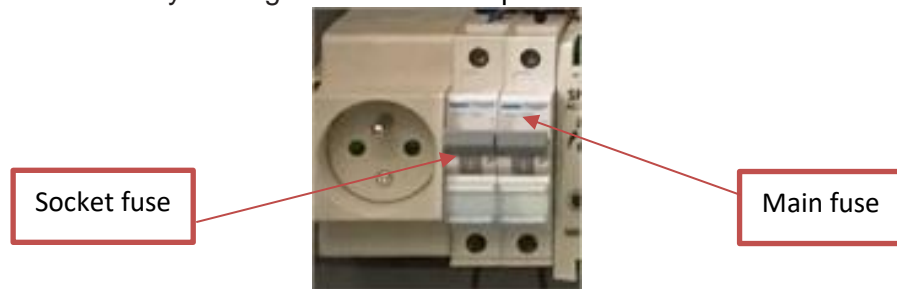
- 2) Power supply and socket connection diagram:



The information and data given are typical for the product described. However technical changes are possible without any notice.

Proud to be a PRÆSIDIAD brand, Betafence is part of a global network, working alongside Guardiar and Hesco as a leader in perimeter security systems and solutions. For more information please visit praesidiad.com.

3) Switch the current on by turning the main switch position to "ON".



WARNING:

THE CABLE DIAMETER CALCULATIONS ARE BASED ON OUR GATE WITH ALL OUR POSSIBLE ACCESSORIES DELIVERED WITH THE GATE. IF YOU ARE CONNECTING MORE ITEMS TO THE GATE, IT MAY BE NECESSARY TO USE A BIGGER CABLE CROSS-SECTION.

The information and data given are typical for the product described. However technical changes are possible without any notice.

Proud to be a PRÆSIDIAD brand, Betafence is part of a global network, working alongside Guardiar and Hesco as a leader in perimeter security systems and solutions. For more information please visit praesidiad.com.

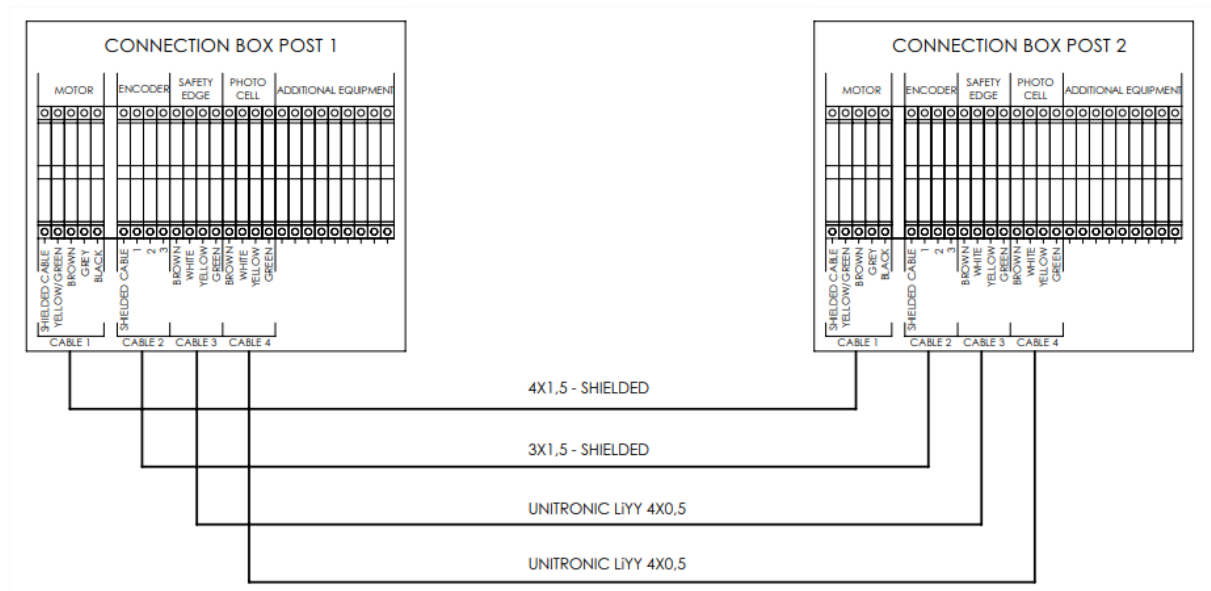
11. Connection between posts

The gate is preassembled, you only need to connect the wires between the posts. The wires are plugged into the boxes, which are located in the holes prepared for it in the post 1 and 2. Cables should be routed through the cable duct which has to be foreseen in the foundation.



11.1. Connection diagram of boxes between posts

All cables have been prepared to the required length. (it is imperative that the cable duct foreseen between the gate posts is positioned & installed as straight as possible in order not to "loose" to much cable.



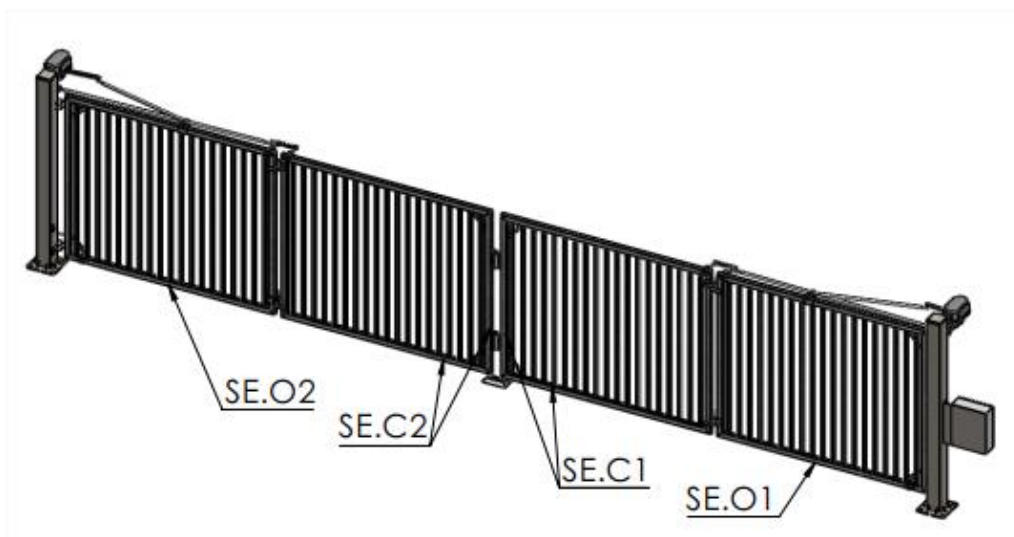
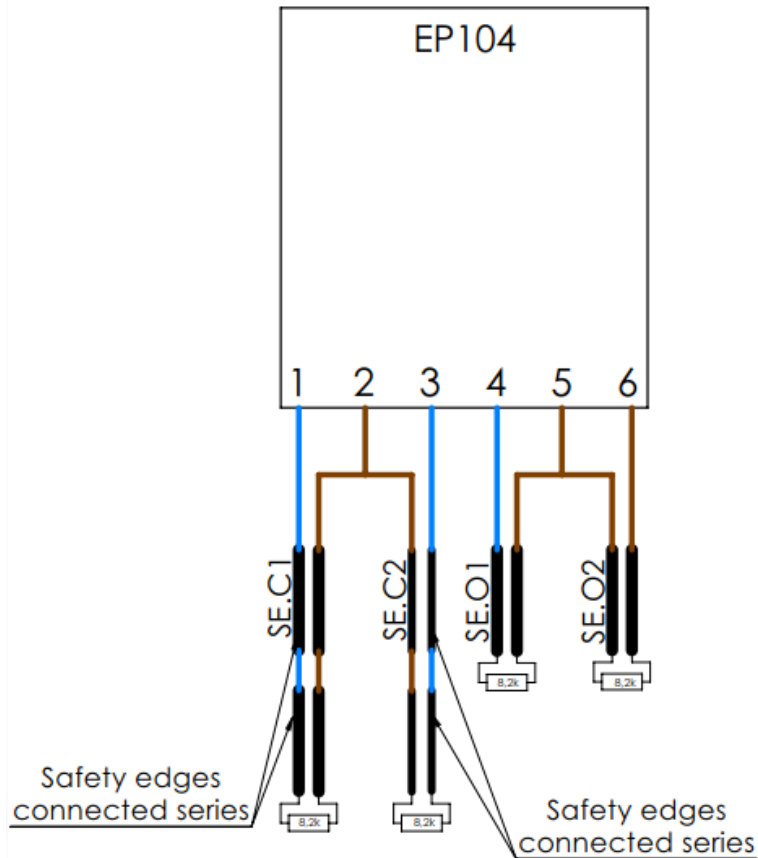
The information and data given are typical for the product described. However technical changes are possible without any notice.

Proud to be a PRÆSIDIAD brand, Betafence is part of a global network, working alongside Guardiar and Hesco as a leader in perimeter security systems and solutions. For more information please visit praesidiad.com.

12. Adjustment and testing of safety equipment

12.1. Safety strips

Wiring diagram for the safety edges is presented below:

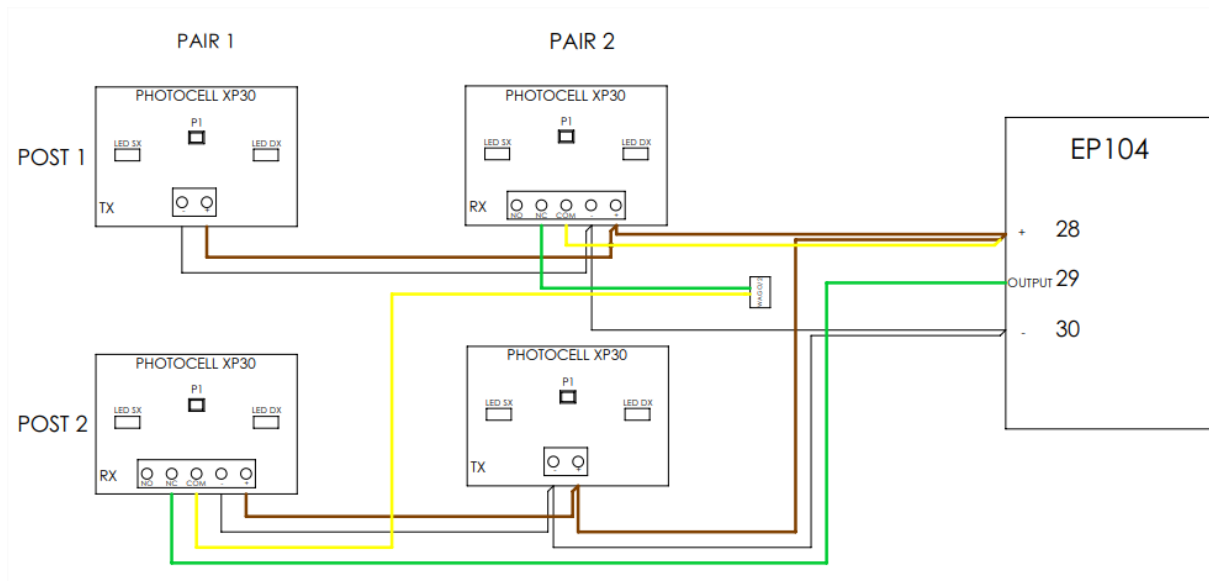


Check if all safety strips are functioning. SE.O1 and SE.O2 safety strips are connected to opening, SE.C1 and SE.C2 safety edges are connected to closing.

The information and data given are typical for the product described. However technical changes are possible without any notice.

Proud to be a PRÆSIDIAD brand, Betafence is part of a global network, working alongside Guardiar and Hesco as a leader in perimeter security systems and solutions. For more information please visit praesidiad.com.

12.2. Photocells



Rx photocells are connected to the power supply (+, -), one contact to + and the other to the input in the controller.

Tx photocells are connected only to the power supply.

Each set consists of a transmitter and receiver.

You can program the photocells so that they work in:

- Closing direction
- Opening direction
- Both directions

The photocells work in pairs and must be aligned so.

Before continuing the commissioning process, check that all LEDs are working correctly. If there is a problem, review the connection instructions and check the connections.

Both when opening and closing the gate, after crossing the photocell line the gate stops.

12.3. Remote controls

12.3.1 Programming Remote control devices to the board

-On the SLH master radio control, simultaneously press and hold down push-buttons P1 and P2.

-The radio control LED begins to flash (for about 10 secs.).

-Release both push-buttons.

-Press, for 1 second, the push-button on the receiver (Fig.1 ref.h) relating to the channel you wish to associate with the radio control.

- The relevant LED on the receiver (Fig. 1 ref. g) begins to flash slowly for 5 secs.

- Within these 5 secs., while the radio control LED is still flashing, press

The information and data given are typical for the product described. However technical changes are possible without any notice.

Proud to be a PRÆSIDIAD brand, Betafence is part of a global network, working alongside Guardiar and Hesco as a leader in perimeter security systems and solutions. For more information please visit praesidiad.com.

and hold down the required push-button on the radio control (the radio control LED lights up on steady beam).

- The LED on the board (Fig.1 ref.g) lights up on steady beam for 1 second and then goes OFF, indicating that storage was executed.
- Release the radio control push-button.
- Quickly press twice in succession the memory stored radio control push-button.



12.3.2 Remote control parameters

P100	Channels in programable input 1
------	--

The information and data given are typical for the product described. However technical changes are possible without any notice.

Proud to be a PRÆSIDIAD brand, Betafence is part of a global network, working alongside Guardiar and Hesco as a leader in perimeter security systems and solutions. For more information please visit praesidiad.com.

	0	Disabled
	1	Enabled
P160	Control function	
	0	Disabled
	1	Open
	2	Close
	3	Stop
	4	Open/close
	5	Open/Stop/Close
P161	Type of control signal when activated	
	0	Pulse (hold-to-run mode not possible)
	1	Signal for as long as the input is activated
P162	Half operation	
	1	Motor 1
	2	Motor 2
	3	Motors 1 and 2
P200	Channels in programable input 1	
	0	Disabled
	1	Enabled
P260	Control function	
	0	Disabled
	1	Open
	2	Close
	3	Stop
	4	Open/close
	5	Open/Stop/Close
P261	Type of control signal when activated	
	0	Pulse (hold-to-run mode not possible)
	1	Signal for as long as the input is activated
P262	Half operation	
	1	Motor 1
	2	Motor 2
	3	Motors 1 and 2

P100-P162 channels are used to set the P1 button on the remote control.
P200-P262 channels are used to set the P2 button on the remote control.

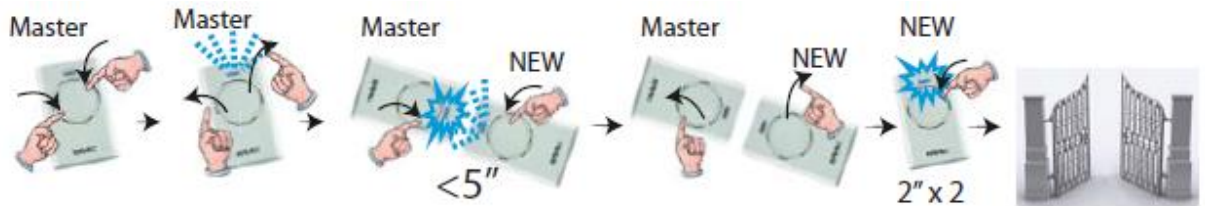
12.3.3. Programming a transmitter to another transmitter

- Using the programmed transmitter (function tested).
- Push both buttons (2 to 3 secs.) until the LED on the top starts to flash. Release

The information and data given are typical for the product described. However technical changes are possible without any notice.

Proud to be a PRÆSIDIAD brand, Betafence is part of a global network, working alongside Guardiar and Hesco as a leader in perimeter security systems and solutions. For more information please visit praesidiad.com.

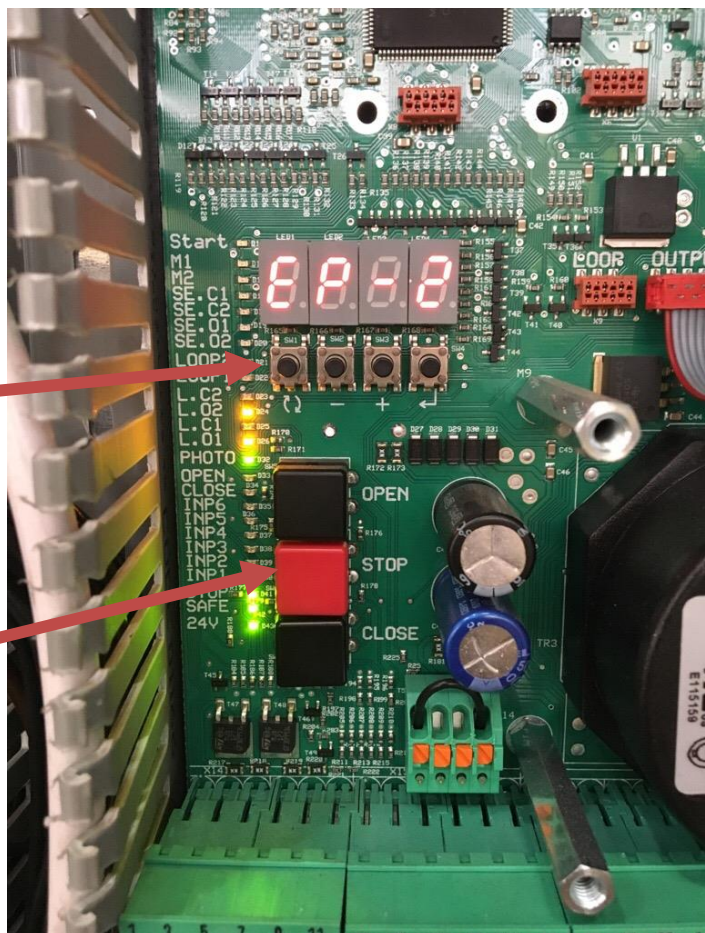
- both buttons. Transmitter is in programming mode.
- Take the transmitter which is to be programmed and hold it together (head to head) with the **Master** transmitter which is already in programming mode (see diagram below).
- Push the programmed button on the Master and simultaneous the button to be programmed on the second transmitter.
- When the LED on the Master stays on, release both buttons.
- Finally push the programmed button on the second transmitter twice in quick succession. LED DL11 on the controller illuminates.
- If this happens the programming was successful.



12.3.4. Parameter adjustment

Control buttons:
 ↻ +100
 - increasing
 + decreasing
 ↶ Parameter edition

Control buttons



13. The most important parameters to set the gate

The information and data given are typical for the product described. However technical changes are possible without any notice.

Proud to be a PRÆSIADIAD brand, Betafence is part of a global network, working alongside Guardiar and Hesco as a leader in perimeter security systems and solutions. For more information please visit praesidiad.com.

13.1. Motor angle settings

L110	Position of motor 1, viewed from the motor side 0 Disabled 1 Left 2 Right
L111	Position readout It shows the current angle of the motor 1, 0-360 degrees
L112	Limit for open position, motor 1 Set the maximum angle in the open position, 145-330 degrees
L113	Limit for closed position, motor 1 Set the maximum angle in the closed position, 15-180 degrees
L120	Position of motor 2, viewed from the motor side 0 Disabled 1 Left 2 Right
L121	Position readout It shows the current angle of the motor 2, 0-360 degrees
L122	Limit for open position, motor 2 Set the maximum angle in the open position, 145-330 degrees
L123	Limit for closed position, motor 2 Set the maximum angle in the closed position, 15-180 degrees
C033	Pulse/hold-to-run 0 Open and close with hold-to-run and load guard inactive 1 Open with pulse and close with hold-to-run and load guard active 2 Open with hold-to-run and close with pulse and and load guard active 3 Open and close with pulse and load guard active 4 Open and close with hold-to-run and load guard active 5 Service mode, only internal open/close buttons with hold to run. Enables L001/2 to be set to 4, operation without limit switch. Load guard inactivated
C063	Reverse priority during movement 0 None 1 Open 2 Close 3 Open and close

13.2. Safety edges

The information and data given are typical for the product described. However technical changes are possible without any notice.

Proud to be a PRÆSIDIAD brand, Betafence is part of a global network, working alongside Guardiar and Hesco as a leader in perimeter security systems and solutions. For more information please visit praesidiad.com.

C101	Safety edge acknowledgement SE.C1 0 Disabled 1 Enabled
C102	Function of output for external protection 0 Check disabled, open output, setting of C113, C123, C133, C143, C343, C643 is disabled 1 Open with pulse and close with hold-to-run and load guard active 2 Open with hold-to-run and close with pulse and and load guard active 3 Open and close with pulse and load guard active 4 Open and close with hold-to-run and load guard active
C103	Function of safety edge input during test of external safety edge unit 0 Low resistance during test 1 High resistance during test
C104	Connection and safety edge function 1 SE.C1 or 2 High resistance during test
C105	Halved speed or activated safety edge (only using a frequency converter) 0 Disabled 1 Active
C111	Selects function for safety edge SE.C1 0 SE.C1 disabled 1 Limits according to set value in C115 2 Fixed limits between 5k Ω and 15k Ω
C112	Reverse /stop with activated safety edge SE.C1 (KSS) 1 Reverse 2 Stop
C113	Control of external protection connected to SE.C1 0 No check 1 Test of protection connected to SE.C1
C114	Reading impedance SE.C1, 0-99.9k Ω Shows the impedance of safety edge SE.C1, you can set it in C115
C115	Setting impedance value for safety edge SE.C1, 1-9.9k Ω Only if C111 is set to 1!

C121	Selects function for safety edge SE.C2 0 SE.C2 disabled
------	--

The information and data given are typical for the product described. However technical changes are possible without any notice.

Proud to be a PRÆSIDIAD brand, Betafence is part of a global network, working alongside Guardiar and Hesco as a leader in perimeter security systems and solutions. For more information please visit praesidiad.com.

	<ul style="list-style-type: none"> 1 Limits according to set value in C125 2 Fixed limits between 5kΩ and 15kΩ
C122	Reverse /stop with activated safety edge SE.C2 (KSS) <ul style="list-style-type: none"> 1 Reverse 2 Stop
C123	Control of external protection connected to SE.C2 <ul style="list-style-type: none"> 0 No check 1 Test of protection connected to SE.C2
C124	Reading impedance SE.C2, 0-99.9kΩ Shows the impedance of safety edge SE.C2, you can set it in C125
C125	Setting impedance value for safety edge SE.C2, 1-9,9kΩ Only if C121 is set to 1!
C131	Selects function for safety edge SE.O1 <ul style="list-style-type: none"> 0 SE.O1 disabled 1 Limits according to set value in C135 2 Fixed limits between 5kΩ and 15kΩ
C132	Reverse /stop with activated safety edge SE.O1 (KSS) <ul style="list-style-type: none"> 1 Reverse 2 Stop
C133	Control of external protection connected to SE.O1 <ul style="list-style-type: none"> 0 No check 1 Test of protection connected to SE.O1
C134	Reading impedance SE.O1, 0-99.9kΩ Shows the impedance of safety edge SE.O1, you can set it in C135
C135	Setting impedance value for safety edge SE.O1, 1-9,9kΩ Only if C131 is set to 1!
C141	Selects function for safety edge SE.O2 <ul style="list-style-type: none"> 0 SE.O2 disabled 1 Limits according to set value in C145 2 Fixed limits between 5kΩ and 15kΩ
C142	Reverse /stop with activated safety edge SE.O2 (KSS) <ul style="list-style-type: none"> 1 Reverse 2 Stop
C143	Control of external protection connected to SE.O2 <ul style="list-style-type: none"> 0 No check 1 Test of protection connected to SE.O2
C144	Reading impedance SE.O2, 0-99.9kΩ Shows the impedance of safety edge SE.O2, you can set it in C145
C145	Setting impedance value for safety edge SE.O2, 1-9,9kΩ Only if C141 is set to 1!

13.3. Load guard and motor settings

The information and data given are typical for the product described. However technical changes are possible without any notice.

Proud to be a PRÆSIDIAD brand, Betafence is part of a global network, working alongside Guardiar and Hesco as a leader in perimeter security systems and solutions. For more information please visit praesidiad.com.

C200	Function of output for external protection 0 Disabled Service and troubleshooting only 1 Reverse when closing, stop when opening 2 Stop when closing and reverse when opening 3 Reverse when closing and opening 4 Stop when closing and opening
C205	Load guard for personal protection active during the closing movement 0 Disabled 1 Active
C211	Load guard delay, 0,01-2,5 seconds
C212	Load guard, connection delay on start, all starts. 0,1-2,5 seconds
C221	Motor protection delay, 3,0-5,0 seconds
C230	Set motor power readout in C231 for personal protection, motor 1 After exceeding the set power, motor 1 stops
C231	Motor power readout, motor 1
C232	Set load guard limit for motor 1 opening, 0,05-1,99 kW
C233	Set load guard limit for motor 1 closing, 0,05-1,99 kW
C240	Set motor power readout in C241 for personal protection, motor 2 After exceeding the set power, motor 2 stops
C241	Motor power readout, motor 2
C242	Set load guard limit for motor 2 opening, 0,05-1,99 kW
C243	Set load guard limit for motor 2 closing, 0,05-1,99 kW
C251	Motor current readout, motor 1
C252	Set motor current readout, motor 1 opening
C253	Set motor current readout, motor 1 closing
C261	Motor current readout, motor 2, 0-20A
C262	Set motor current readout, motor 2 opening
C263	Set motor current readout, motor 2 closing

13.4. Frequency converter channel list

F-channels are only viewed if c202 is set to 4, frequency converter.

The information and data given are typical for the product described. However technical changes are possible without any notice.

Proud to be a PRÆSIDIAD brand, Betafence is part of a global network, working alongside Guardiar and Hesco as a leader in perimeter security systems and solutions. For more information please visit praesidiad.com.

F001	Communication with frequency converter	
	0	Disabled
	1	Enabled
F002	Acceleration time from closed position motor 1 and 2 (from 0-100Hz) 0,5 - 9,9 seconds	
F003	Acceleration time in all movements except at closed position motor 1 and motor 2 0,5 - 9,9 seconds	
F004	Acceleration time when P500 is set to 2 and the input is activated, battery backup 5,0 - 12,0 seconds	
F005	Retardation time with limit switch and change of direction for motor 1 and 2 0,5 - 9,9 seconds	
F006	Retardation time with photocell and vehicle loops for motor 1 and 2 0,5 - 9,9 seconds	
F008	Low-speed frequency for opening movement, 5-20Hz	
F009	Low-speed frequency for closing movement, 5-20Hz	
F012	Opening frequency / opening speed for motor 1 21-99Hz	
F013	Closing frequency / closing speed for motor 1 21-99Hz	
F014	Increase in limit in L114 as speed will decrease during the opening movement, motor 1 (Only when using a frequency converter)	
F015	Increase in limit in L115 as speed will decrease during the closing movement, motor 1 (Only when using a frequency converter)	
F022	Opening frequency / opening speed for motor 2 21-99Hz	
F023	Closing frequency / closing speed for motor 2 21-99Hz	
F024	Increase in limit in L124 as speed will decrease during the opening movement, motor 2 (Only when using a frequency converter)	
F025	Increase in limit in L125 as speed will decrease during the closing movement, motor 2 (Only when using a frequency converter)	

13.5. Photocell

C340	Photocell safety function in closing movement
------	---

The information and data given are typical for the product described. However technical changes are possible without any notice.

Proud to be a PRÆSIDIAD brand, Betafence is part of a global network, working alongside Guardiar and Hesco as a leader in perimeter security systems and solutions. For more information please visit praesidiad.com.

	<ul style="list-style-type: none"> 0 Disabled 1 Reverse to fully open 2 Stop with restart of automatic closing 3 Stop, wait for new control signal or time in C520 and automatic closing
C341	Safety during run-on-time or disengagement angle in closing movement <ul style="list-style-type: none"> 0 Disabled when both halves are in run-on or disengagement angle 1 Activated according to C340
C342	Function of output for external protection <ul style="list-style-type: none"> 0 Disabled 1 Reverse to fully closed 2 Stop with automatic restart of automatic closing 3 Stop, wait for new control signal or time in C520 and automatic closing 4 Stop with restart of opening
C343	Check of external protection connected to PHOTO <ul style="list-style-type: none"> 0 No check 1 Test of protection connected to PHOTO
C351	PHOTO closing <ul style="list-style-type: none"> 0 disabled 1 Enabled and subordinated to C340
C354	Type of closing with PHOTO <ul style="list-style-type: none"> 0 Close immediately if PHOTO is clear 1 Open first then close if PHOTO is clear
C500	Automatic closing time, 0,00-9,59 minutes
C501	Short automatic closing time, 0,00-9,9 seconds

14. Indications

To simplify commissioning and troubleshooting, LEDs are provided to indicate faults and the

The information and data given are typical for the product described. However technical changes are possible without any notice.

Proud to be a PRÆSIDIAD brand, Betafence is part of a global network, working alongside Guardiar and Hesco as a leader in perimeter security systems and solutions. For more information please visit praesidiad.com.

status of input signals, as shown in the table below.

Colour	Indication	Active when
Yellow	START	Constant when control signal received, flashing when counting down for automatic closing, Slowly flashing when counting down channel C520.
Red	M1	A constant LED means that the load guard setting has been exceeded, and a flashing LED means that the load guard has been triggered for motor 1.
	M2	A constant LED means that the load guard setting has been exceeded, and a flashing LED means that the load guard has been triggered for motor 2.
	SE.C1	A constant LED means that the safety edge has been activated, and a flashing LED means that the safety edge has been reset.
	SE.C2	A constant LED means that the safety edge has been activated, and a flashing LED means that the safety edge has been reset.
	SE.O1	A constant LED means that the safety edge has been activated, and a flashing LED means that the safety edge has been reset.
	SE.O2	A constant LED means that the safety edge has been activated, and a flashing LED means that the safety edge has been reset.
Yellow	LOOP2	Vehicle loop 2 activated
	LOOP1	Vehicle loop 1 activated
	L.C2	Motor 2 not finished closing, extinguished in closed position, flashing means the input is not programmed, quick flashing means hold-to-run without limit switch
	L.O2	Motor 2 not finished opening, extinguished in closed position, flashing means the input is not programmed, quick flashing means hold-to-run without limit switch
	L.C1	Motor 1 not finished closing, extinguished in closed position, flashing means the input is not programmed, quick flashing means hold-to-run without limit switch
	L.O1	Motor 1 not finished opening, extinguished in closed position, flashing means the input is not programmed, quick flashing means hold-to-run without limit switch
Green	PHOTO	Photocell not activated, circuit closed
Yellow	OPEN	Signal from internal button – open
	CLOSE	Signal from internal button – close
	INP6	Signal on programmable input 6, closed circuit between terminals 25 & 27
	INP5	Signal on programmable input 5, closed circuit between terminals 25 & 26
	INP4	Signal on programmable input 4, closed circuit between terminals 22 & 24
	INP3	Signal on programmable input 3, closed circuit between terminals 22 & 23
	INP2	Signal on programmable input 2, closed circuit between terminals 19 & 21
	INP1	Signal on programmable input 1, closed circuit between terminals 19 & 20
Green	STOP	Stop not activated, circuit closed - Okay
	SAFE	Electronics for the internal safety circuit are active – Okay
Green	12 V	Voltage 12VDC - Okay
	24V	Voltage 12VDC - Okay
Indications in top right-hand corner		
Yellow	CLOSE2	Contact for closing movement activated – motor 2
	OPEN2	Contact for opening movement activated – motor 2
	CLOSE1	Contact for closing movement activated – motor 1
	OPEN1	Contact for opening movement activated – motor 1

The information and data given are typical for the product described. However technical changes are possible without any notice.

Proud to be a PRÆSIDIAD brand, Betafence is part of a global network, working alongside Guardiar and Hesco as a leader in perimeter security systems and solutions. For more information please visit praesidiad.com.



The Maintenance and Safety check procedures can be found back on our website.
www.betafence.com

The specific product guarantee for the Faldivia Gate can be found back on our website
www.betafence.com

The specific gate drawings & foundations plans will be shared with the customer on moment of order for approval, only after approval of the drawings the production of the gate will start.

Version 0.0 => 20 November 2024

The information and data given are typical for the product described. However technical changes are possible without any notice.

Proud to be a PRÆSIDIAD brand, Betafence is part of a global network, working alongside Guardiar and Hesco as a leader in perimeter security systems and solutions. For more information please visit praesidiad.com.